

# CAST IRON CHECK VALVE DIN PN 16 model 360 Sealing - metal / metal

Материал cast iron EN GJL-250; DIN GG25  
 Налягане PN 16  
 Размер DN 40 - 300

## TECHNICAL DESCRIPTION

Swing check valve with metal to metal disc sealing, flanged connection and bolted cover - MODEL 360.  
 Also for installation in vertical pipelines. Upwards flow only.

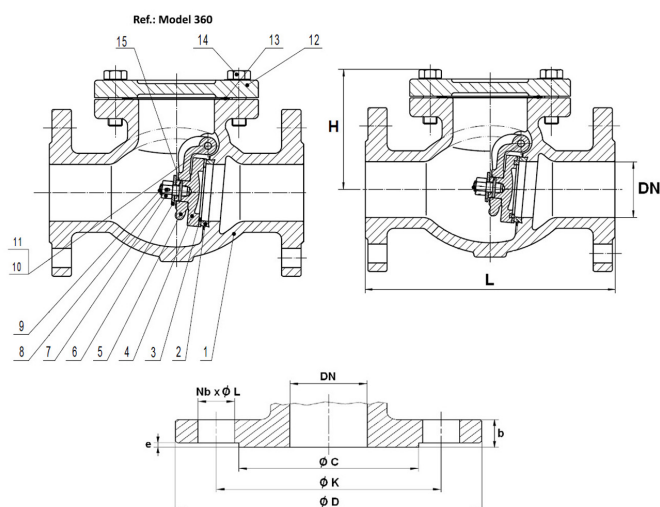
Min and max Temperature Ts : - 10°C to + 120°C for metal seat type Ref.360

## WORKING FLUID / MEDIA

Heating, water distribution and watering

## OPTIONS

Other materials on request



| No. | Part          | Material                    | Specification          |                  |
|-----|---------------|-----------------------------|------------------------|------------------|
| 1   | Body          | Cast iron EN GJL-250 (GG25) | Standart:              | DIN 3202 F1      |
| 2   | Seat ring     | Brass                       | Flange standard:       | EN1092-2         |
| 3   | Disc Ring     | Brass                       | Face to face standard: | EN558, Series 1  |
| 4   | Disc          | Cast iron EN GJL-250 (GG25) | Bonnet connection:     | Bolted           |
| 5   | Hanger        | Ductile iron EN-GJS-400-15  | Execution:             | Straight         |
| 6   | Washer        | Steel                       | Connection type:       | Flanged          |
| 7   | Nut           | Steel                       | Operation:             | Non-return valve |
| 8   | Split pin     | AISI 304                    | Actuation:             | Self Return      |
| 9   | Disc screw    | Steel                       | Tmax                   | 120 °C           |
| 10  | Hexagon plug  | Brass                       |                        |                  |
| 11  | Hanger pin    | AISI 304                    |                        |                  |
| 12  | Bonnet        | Cast iron EN GJL-250 (GG25) |                        |                  |
| 13  | Bonnet gasket | Graphite                    |                        |                  |
| 14  | Bonnet screw  | Steel                       |                        |                  |
| 15  | Pin           | AISI 304                    |                        |                  |

| Dn | Pressure rating | Connection | L   | H   | øc | ød  | øk  | Nb x ø l | B  | E | Weight (kg) |
|----|-----------------|------------|-----|-----|----|-----|-----|----------|----|---|-------------|
| 40 | PN 16           | PN 16      | 180 | 109 | 84 | 150 | 110 | 4 x 19   | 18 | 3 | 8.5         |
| 50 | PN 16           | PN 16      | 200 | 112 | 99 | 165 | 125 | 4 x 19   | 20 | 3 | 11.2        |

**CAST IRON CHECK VALVE DIN PN 16 model  
360 Sealing - metal / metal**

Материал cast iron EN GJL-250; DIN GG25

Налягане PN 16

Размер DN 40 - 300

| Dn  | Pressure rating | Connection | L   | H   | øc  | ød  | øk  | Nb x ø l | B  | E | Weight (kg) |
|-----|-----------------|------------|-----|-----|-----|-----|-----|----------|----|---|-------------|
| 65  | PN 16           | PN 16      | 240 | 132 | 118 | 185 | 145 | 4 x 19   | 20 | 3 | 15.5        |
| 80  | PN 16           | PN 16      | 260 | 141 | 132 | 200 | 160 | 8 x 19   | 22 | 3 | 19          |
| 100 | PN 16           | PN 16      | 300 | 162 | 156 | 220 | 180 | 8 x 19   | 24 | 3 | 28.5        |
| 125 | PN 16           | PN 16      | 350 | 192 | 184 | 250 | 210 | 8 x 19   | 26 | 3 | 42.2        |
| 150 | PN 16           | PN 16      | 400 | 211 | 211 | 285 | 240 | 8 x 23   | 26 | 3 | 57          |
| 200 | PN 16           | PN 16      | 500 | 270 | 266 | 340 | 295 | 12 x 23  | 30 | 3 | 93          |
| 250 | PN 16           | PN 16      | 600 | 316 | 319 | 405 | 355 | 12 x 28  | 32 | 3 | 159         |
| 300 | PN 16           | PN 16      | 700 | 357 | 370 | 460 | 410 | 12 x 28  | 32 | 4 | 215         |