

CAST STEEL BALL VALVE, WELDING ENDS (SW) 3 PARTS • DIN PN 40

Материал steel 1.0619; DIN GS-C25

Налягане PN 40

Размер DN 15 - 25

APPLICATION

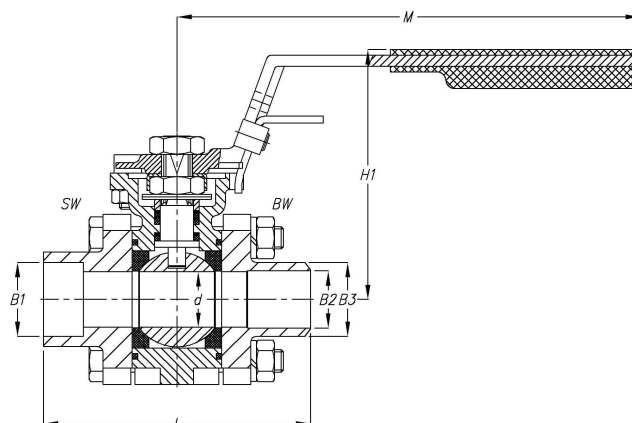
Corrosive fluids. Fuel oil, lubricating oil and flammable hydraulic oil. Cargo oil. Air. Gas. Non-flammable hydraulic fluid. Boiler feedwater, condensate. Seawater and freshwater.

VARIANTS

Other materials on request.

OPTIONS

Butt weld connection



Part	Material	Specifications	
Body	Carbon steel 1.0619; DIN GS-C25;	Standart:	DIN 3202 F1
Cap	Carbon steel 1.0619; DIN GS-C25;	Flange standard:	EN1092-2
Ball	Stainless steel 1.4408 (AISI316)	Face to face standard:	EN558, Series 1
Seat	PTFE	Execution:	Straight
Stem	Stainless steel 1.4408 (AISI316)	Connection type:	Socket Weld DIN3239-2
		Operation:	Lever
		Actuation:	quarterturn
		Tmax	120 °C

Dn	D	H	F	H1	L	Butt weld reduced port		Butt weld full port		Socket weld		M	Weight
						B3	B2	B3	B2	Red	Full		
										B1	B1		
						[mm]						[kg]	
15	12,7	35	11	77	67	21,3	15,8	17,1	12,5	22,4	17,5	120	0,7
20	15	40	12	82	72	26,7	21	21,3	15,8	27,4	22,4	135	0,9
25	20	46	14	90	97	33,4	26,6	26,7	21	34,2	27,4	170	1,5