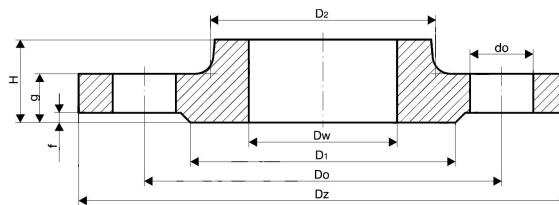


FLANGE TYPE "SLIP-ON" ANSI B16.5 CLASS #300

Материал steel ASTM A105WCB
 Налягане ANSI #300
 Размер 1/2" - 24"

TECHNICAL DESCRIPTION

Flat "SLIP-ON" flanges ANSI B16.5 / Class # 300 is a type of steel flange which slides over the end of steel piping and then welded in place. Because the pipe slips into the flange before welding, it has a low hub. The inside and outside of the flange are both welded, resulting in sufficient strength and no leak. Slip-on flanges can be easily fitted and welded into different pipes. It is perfect for lower pressure applications.



In stock we keep, flat / "SLIP-ON" flanges ANSI B16.5 / class # 150 and # 300, but flanges up to # 2500 can be delivered from different materials. We have the necessary machining equipment, which also allows us to offer flanges with sealing surfaces.

- type of sealing surface A, B2, C, D, E, F
- non-standard sealing surfaces per job
- Profile channels for metal seals (segments) type RTJ
- Threaded flanges
- Flanges made by customer's order, and others.

STOCK MATERIALS:

- Carbon Steel ASTM A105 WCB

No.	Position	Materials	Standart
1	WELD NECK FLANGE ANSI B16.5 / #150	steel A105 WCB (1.0432)	ASTM A 695-95
	other material on request		
		ASTM A105N ; C22.8 (1.0460)	ASTM
		ASTM/ASME A182 F1-F12-F11	ASTM A 182-02
	other stainless steel materials on request		
		Stainless steel - ASTM A182 F304 - 304L	ASTM
		Stainless steel - AISI A182 F316 - F316L	ASTM
		Low temp/ alloy - ASTM A352 LF2 low temp	ASTM
		High performance steel - ASTM A694 F42 ; F52	ASTM

Specifications	
Standart:	ANSI B16.5
Pressure Rating:	#300 (PN50)

FLANGE TYPE "SLIP-ON" ANSI B16.5 CLASS #300

Материал steel ASTM A105WCB

Налягане ANSI #300

Размер 1/2" - 24"

Specifications	
Sealing face type:	Flat Face (FF), Raised Face (RF);
	Ring Joint (RTJ)

Nd	Pipe o.d. Dz	Flange slip on ansi b16.5 / #300										Holes	
		Dw	Dz	Do	G	Do	H	D2	D	F	Kg	N	
1/2"	21,3	22,3	95,2	66,5	14,2	L 15,7	22,3	38,1	35,0	1,6	0,64	4	
3/4"	26,7	27,7	117,3	82,5	15,7	19,0	25,4	47,7	42,9	1,6	1,12	4	
1"	33,4	34,5	123,9	88,9	17,5	19,0	26,9	53,8	50,8	1,6	1,36	4	
1 1/4"	42,2	43,2	133,3	98,5	19,0	19,0	26,9	63,5	63,5	1,6	1,68	4	
1 1/2"	48,3	49,5	155,4	114,3	20,6	22,3	30,2	69,8	73,1	1,6	2,49	4	
2"	60,3	62,0	165,1	127,0	22,3	19,0	33,2	84,0	91,9	1,6	2,87	8	
2 1/2"	73,0	74,7	190,5	149,3	25,4	22,3	38,1	100,0	104,6	1,6	4,32	8	
3"	88,9	90,7	209,5	168,1	28,4	22,3	42,9	117,3	127,0	1,6	5,85	8	
3 1/2"	101,6	103,4	228,6	184,1	30,2	22,3	44,4	133,3	139,7	1,6	7,34	8	
4"	114,3	116,1	254,0	200,1	31,7	22,3	47,7	146,0	157,2	1,6	9,61	8	
5"	141,3	143,8	279,4	234,9	35,0	22,3	50,8	177,8	185,6	1,6	12,3	8	
6"	168,3	170,7	317,5	269,7	36,5	22,3	52,3	206,3	215,9	1,6	15,6	12	
8"	219,1	221,5	381,0	330,2	41,1	25,4	61,9	260,3	269,7	1,6	24,2	12	
10"	273,0	276,3	444,5	387,3	47,7	28,4	66,5	320,5	323,8	1,6	34,1	16	
12"	323,8	327,1	520,7	450,8	50,8	31,7	73,1	374,6	381,0	1,6	49,8	16	
14"	355,6	359,1	584,2	514,3	53,8	31,7	76,2	425,4	412,7	1,6	69,9	20	
16"	406,4	410,5	647,7	571,5	57,1	35,0	82,5	482,6	469,9	1,6	88,1	20	
18"	457,2	461,8	711,2	628,6	60,4	35,0	88,9	533,4	533,4	1,6	109	24	
20"	508,0	513,1	774,7	685,8	63,5	35,0	95,2	587,2	584,2	1,6	134	24	
24"	609,6	615,9	914,4	812,8	69,8	41,1	106,4	701,5	692,1	1,6	201	24	