

# FLAT FLANGE TYPE 01/B1 EN1092-1 PN 10

Материал steel EN P245GH

Налягане PN 10

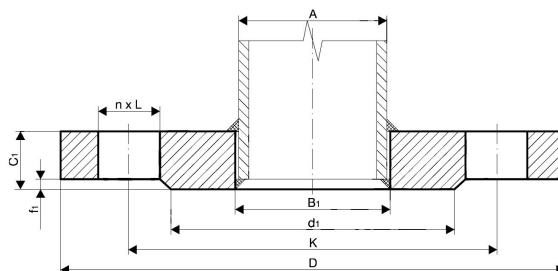
Размер DN 10 - 2000

## TECHNICAL DESCRIPTION

Flat flanges according to EN1092-1 / type 01 / B1 are one of the most common used pipe connection elements and are widely used in building of steel pipelines and pipe spools for industry, shipbuilding, ship repairs and many other branches.

Our stock availability consists of steel flanges according to EN1092-1 type 01 / with sealing surface B1 and sizes up to DN2000. We have all necessary machine equipment, that allows us to machine flanges with different profiles and sealing surfaces as follows.

- type of sealing surface A, B2, C, D, E, F
- non-standard sealing surfaces as per clients specification
- machining of profile channels for metal sealing rings type RTJ
- threaded type flanges
- custom machined flanges made by clients specification.



## MATERIALS KEPTED ON STOCK:

- Carbon steel

P245GH (1.0352) / EN 10222-2

No.	Parts	Materials	Standart
1	FLANGE 01/B1 EN1092-1 PN10	carbon steel P245GH / (1.0352)	EN 10222-2
	other carbon steel materials on request		
		P245GH / 1.0352	EN 10222-2
		P265GH / 1.0425	EN 10028-2
		P280GH / 1.0426	EN 10222-2
		P355NL1 / 1.0566	EN 10028-3
		16Mo3; 15Mo3 / 1.5415	EN 10222-2
	other stainless steel materials on request		
		AISI 304L (X2CrNiMo17-12-2) / 1.4404	EN 10222-5
		AISI 316L (X2CrNiMo17-12-2) / 1.4404	EN 10222-5
		AISI 321 (X6CrNiTi18-10) / 1.4541	EN 10222-5
		AISI 316Ti (X6CrNiMoTi17-12-2) / 1.4571	EN 10222-5

Specifications	
Standart:	EN1092-1 01/B1

# FLAT FLANGE TYPE 01/B1 EN1092-1 PN 10

Материал steel EN P245GH

Налягане PN 10

Размер DN 10 - 2000

Specifications	
Pressure Rating:	PN10

Dn	Pipe o.d.	Flange type 01/b1 en1092-1 pn10								Screws	
		A	B1	D	K	D1	F1	C1	L	Weight kg	N
10	13,5*	14	90	60	40	2		14	0,62	4	M12
	17,2	18							0,60		
15	20,0*	20,5	95	65	45	2	14	14	0,68	4	M12
	21,3	22,0							0,67		
20	25,0*	26	105	75	58	2	16	14	0,96	4	M12
	26,9	27,5							0,94		
25	30,0*	32	115	85	68	2	16	14	1,13	4	M12
	33,7	34,5							1,11		
32	38,0*	39	140	100	78	2	18	18	1,84	4	M16
	42,4	43,5							1,82		
40	44,5*	45,5	150	110	88	3	18	18	2,10	4	M16
	48,3	49,5							2,08		
50	57,0*	158	165	125	102	3	20	18	2,80	4	M16
	60,3	61,5							2,73		
65	76,1	77,5	185	145	122	3	20	18	3,16	8a	M16
80	88,9	90,5	200	160	138	3	20	18	3,60	8	M16
100	108,0*	109	220	180	158	3	22	18	4,42	8	M16
	114,3	116							4,39		
125	133,0*	135	250	210	188	3	22	18	5,43	8	M16
	139,7	141,5							5,41		
150	159,0*	161	285	240	212	3	24	22	7,21	8	M20
	168,3	170,5							7,14		
200	219,1	221,5	340	295	268	3	24	22	9,27	8	M20
250	273,0	276,5	395	350	320	3	26	22	11,80	12	M20
300	323,9	327,5	445	400	370	4	26	122	13,60	12	M20
350	355,6	359,5	505	460	430	4	30	22	20,40	16	M20
400	406,4	411	565	515	482	4	32	26	27,50	16	M24
450	457,0	462	615	565	532	4	36	26	33,60	20	M24
500	508,0	513,5	670	620	585	4	38	26	40,20	20	M24

**FLAT FLANGE TYPE 01/B1 EN1092-1 PN 10**

Материал steel EN P245GH

Налягане PN 10

Размер DN 10 - 2000

Dn	Pipe o.d.	Flange type 01/b1 en1092-1 pn10								Screws	
		A	B1	D	K	D1	F1	C1	L	Weight kg	N
600	610,0	616,5	780	725	685	5	42	30	54,50	20	M27
700	711,0	b	895	840	800	5	50	30	-	24	M27
800	813,0	b	1015	950	905	5	56	33	-	24	M30
900	914,0	b	1115	1050	1005	5	62	33	-	28	M30
1000	1016,0	b	1230	1160	1110	5	70	36	-	28	M33
1200	1219,0	b	455	1380	1330	5	83	39	-	32	M36
1400	1422,0	b	1675	1590	1535	5	b	42	-	36	M39
1600	1626,0	b	1915	1820	1760	5	b	48	-	40	M45
1800	1829,0	b	2115	2020	1960	5	b	48	-	44	M45
2000	2032,0	b	2325	2230	2170	5	b	48	-	48	M45
*) pipe diameters not provided for in EN 1092-1: 2013 standards - they can be made to customer's special order.											
b) After agreement with ordering party.											