

FLAT FLANGE TYPE 01/B1 EN1092-1 PN 100

Материал steel EN P245GH

Налягане PN 100

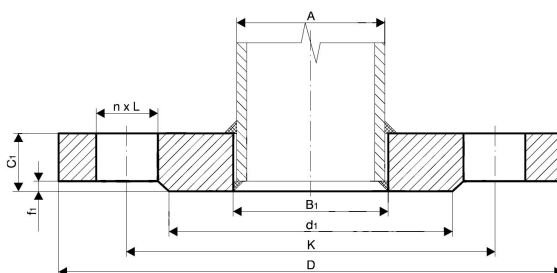
Размер DN 10 - 350

TECHNICAL DESCRIPTION

Flat flanges according to EN1092-1 / type 01 / B1 are one of the most common used pipe connection elements and are widely used in building of steel pipelines and pipe spools for industry, shipbuilding, ship repairs and many other branches.

Our stock availability consists of steel flanges according to EN1092-1 type 01 / with sealing surface B1 and sizes up to DN2000. We have all necessary machine equipment, that allows us to machine flanges with different profiles and sealing surfaces as follows.

- type of sealing surface A, B2, C, D, E, F
- non-standard sealing surfaces as per clients specification
- machining of profile channels for metal sealing rings type RTJ
- threaded type flanges
- custom machined flanges made by clients specification.



MATERIALS KEPTED ON STOCK:

- Carbon steel

P245GH (1.0352) / EN 10222-2

No.	Parts	Materials	Standart
1	FLANGE 01/B1 EN1092-1 PN100	carbon steel P245GH / (1.0352)	EN 10222-2
	other carbon steel materials on request		
		P245GH / 1.0352	EN 10222-2
		P265GH / 1.0425	EN 10028-2
		P280GH / 1.0426	EN 10222-2
		P355NL1 / 1.0566	EN 10028-3
		16Mo3; 15Mo3 / 1.5415	EN 10222-2
	other stainless steel materials on request		
		AISI 304L (X2CrNiMo17-12-2) / 1.4404	EN 10222-5
		AISI 316L (X2CrNiMo17-12-2) / 1.4404	EN 10222-5
		AISI 321 (X6CrNiTi18-10) / 1.4541	EN 10222-5
		AISI 316Ti (X6CrNiMoTi17-12-2) / 1.4571	EN 10222-5

Specifications	
Standart:	EN1092-1 01/B1

FLAT FLANGE TYPE 01/B1 EN1092-1 PN 100

Материал steel EN P245GH

Налягане PN 100

Размер DN 10 - 350

Specifications	
Pressure Rating:	PN100

Dn	Pipe o.d.	Flange type 01/b1 en1092-1 pn100								Screws	
		B1	D	K	d1	f1	C1	L	Weight kg	n	Size
10	13,5*	14	100	70	40	2	20	14	1,02	4	M12
	17,2	18							1,00		
15	20,0*	20,5	105	75	45	2	20	14	1,11	4	M12
	21,3	22,0							1,10		
20	25,0*	26	130	90	58	2	22	18	1,87	4	M16
	26,9	27,5							1,86		
25	30,0*	32	140	100	68	2	24	18	2,39	4	M16
	33,7	34,5							2,36		
32	38,0*	39	155	110	78	2	24	22	2,84	4	M20
	42,4	43,5							2,79		
40	44,5*	45,5	170	125	88	3	26	22	3,63	4	M20
	48,3	49,5							3,57		
50	57,0*	58	195	145	102	3 1	28	26	5,05	4	M24
	60,3	61,5							4,98		
65	76,1	77,5	220	170	122	3	30	26	6,32	8	M24
80	88,9	90,5	230	180	138	3	34	26	7,71	8	M24
100	108,0*	109	265	210	162	3	36	30	10,67	8	M27
	114,3	116							10,32		
125	133,0*	135	315	250	188	3	42	33	17,69	8	M30
	139,7	141,5							17,22		
150	159,0*	161	355	290	218	3	48	33	24,53	12	M30
	168,3	170,5							23,60		
200	219,1	221,5	430	360	285	3	60	36	42,84	42	M33
250	273,0	276,5	505	430	345	3	72	39	68,95	12	M36
300	323,9	327,5	585	500	410	4	84	42	103,42	16	M39
350	355,6	359,5	655	560	465	4	95	48	149,58	16	M45

*) pipe diameters not provided for in EN 1092-1: 2013 - can be made on customer's special request.