

FLAT FLANGE TYPE 01/B1 EN1092-1 PN 16

Материал steel EN P245GH

Налягане PN 16

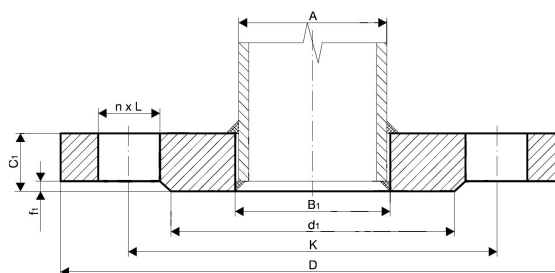
Размер DN 10 - 2000

TECHNICAL DESCRIPTION

Flat flanges according to EN1092-1 / type 01 / B1 are one of the most common used pipe connection elements and are widely used in building of steel pipelines and pipe spools for industry, shipbuilding, ship repairs and many other branches.

Our stock availability consists of steel flanges according to EN1092-1 type 01 / with sealing surface B1 and sizes up to DN2000. We have all necessary machine equipment, that allows us to machine flanges with different profiles and sealing surfaces as follows.

- type of sealing surface A, B2, C, D, E, F
- non-standard sealing surfaces as per clients specification
- machining of profile channels for metal sealing rings type RTJ
- threaded type flanges
- custom machined flanges made by clients specification.



MATERIALS KEPTED ON STOCK:

- Carbon steel

P245GH (1.0352) / EN 10222-2

No.	Parts	Materials	Standart
1	FLANGE 01/B1 EN1092-1 PN16	carbon steel P245GH / (1.0352)	EN 10222-2
	other carbon steel materials on request		
		P245GH / 1.0352	EN 10222-2
		P265GH / 1.0425	EN 10028-2
		P280GH / 1.0426	EN 10222-2
		P355NL1 / 1.0566	EN 10028-3
		16Mo3; 15Mo3 / 1.5415	EN 10222-2
	other stainless steel materials on request		
		AISI 304L (X2CrNiMo17-12-2) / 1.4404	EN 10222-5
		AISI 316L (X2CrNiMo17-12-2) / 1.4404	EN 10222-5
		AISI 321 (X6CrNiTi18-10) / 1.4541	EN 10222-5
		AISI 316Ti (X6CrNiMoTi17-12-2) / 1.4571	EN 10222-5

Specifications	
Standart:	EN1092-1 01/B1

FLAT FLANGE TYPE 01/B1 EN1092-1 PN 16

Материал steel EN P245GH

Налягане PN 16

Размер DN 10 - 2000

Specifications	
Pressure Rating:	PN16

Dn	Pipe o.d.	Flange type 01/b1 en1092-1 pn16								Screws	
		A	B1	D	K	D1	F1	C1	L	Weight kg	N
10	13,5*	14	90	60	40	2	14	14	0,61	4	M12
	17,2	18							0,60		
15	20,0*	20,5	95	65	45	2	14	14	0,68	4	M12
	21,3	22,0							0,67		
20	25,0*	26	105	75	58	2	16	14	0,95	4	M12
	26,9	27,5							0,94		
25	30,0*	32	115	85	68	2	16	14	1,12	4	M12
	33,7	34,5							1,11		
32	38,0*	39	140	100	78	2	18	18	1,84	4	M16
	42,4	43,5							1,82		
40	44,5*	45,5	150	110	88	3	18	18	2,10	4	M16
	48,3	49,5							2,08		
50	57,0*	58	165	125	102	3 1	20	^18	2,75	4	M16
	60,3	61,5							2,73		
65	76,1	77,5	185	145	122	3	20	18	3,16	8a	M16
80	88,9	90,5	200	160	138	3	20	18	3,60		M16
100	108,0*	109	220	180	158	3	22	18	4,40	8	M16
	114,3	116							4,39		
125	133,0*	135	250	210	188	3	22	18	5,43	8	M16
	139,7	141,5							5,41		
150	159,0*	161	285	240	212	3	24	22	7,16	8	M20
	168,3	170,5							7,14		
200	219,1	221,5	340	295	268	3	26	22	9,73	12	M20
250	273,0	276,5	405	355	320	3	29	26	14,20	12	M24
300	323,9	327,5	460	410	378		32	26	19,00	12	M24
350	355,6	359	520	470	438	4	35	26	28,20	16	M24
400	406,4	411	580	525	490	4	38	30	35,90	16	M27
450	457,0	462	640	585	550	4	42	30	46,10	20	M27
500	508,0	513,5	715	650	610	4	46	33	64,00	20	M30

FLAT FLANGE TYPE 01/B1 EN1092-1 PN 16

Материал steel EN P245GH

Налягане PN 16

Размер DN 10 - 2000

Dn	Pipe o.d.	Flange type 01/b1 en1092-1 pn16								Screws	
		A	B1	D	K	D1	F1	C1	L	Weight kg	N
600	610,0	616,5	840	770	725	5	55	36	102,00	20	M33
700	711,0	b	910	840	795	5	63	36	-	24	M33
800	813,0	b	1025	950	900	5	74	39	-	24	M36
900	914,0	b	*1125	1050	1000	5	82	39	-	28	M36
1000	1016,0	b	1255	1170	1115	5	90	42	-	28	M39
1200	1219,0	b	1485	1390	13301	5	b	48	-	32	M45
1400	1422,0	b	1685	1590	1530	5	b	48	-	36	M45
1600	1626,0	b	1930	1820	1750	5	b	56	-	40	M52
1800	1829,0	b	2130	2020	1950	5	b	56	-	44	M52
2000	2032,0	b	2345	2230	2150	5	b	62	-	48	M56
a) Flanges with 4 holes can be supplied after agreement between the customer and the manufacturer.											
b) After agreement with the ordering party											
*) pipe diameters not provided for in EN 1092-1: 2013 standards - they can be made to customer's special order.											