

FLAT FLANGE TYPE 01/B1 EN1092-1 PN 25

Материал steel EN P245GH

Налягане PN 25

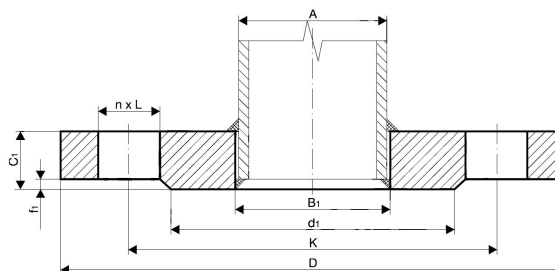
Размер DN 10 - 1000

TECHNICAL DESCRIPTION

Flat flanges according to EN1092-1 / type 01 / B1 are one of the most common used pipe connection elements and are widely used in building of steel pipelines and pipe spools for industry, shipbuilding, ship repairs and many other branches.

Our stock availability consists of steel flanges according to EN1092-1 type 01 / with sealing surface B1 and sizes up to DN2000. We have all necessary machine equipment, that allows us to machine flanges with different profiles and sealing surfaces as follows.

- type of sealing surface A, B2, C, D, E, F
- non-standard sealing surfaces as per clients specification
- machining of profile channels for metal sealing rings type RTJ
- threaded type flanges
- custom machined flanges made by clients specification.



MATERIALS KEPTED ON STOCK:

- Carbon steel

P245GH (1.0352) / EN 10222-2

No.	Parts	Materials	Standart
1	FLANGE 01/B1 EN1092-1 PN25	carbon steel P245GH / (1.0352)	EN 10222-2
	other carbon steel materials on request		
		P245GH / 1.0352	EN 10222-2
		P265GH / 1.0425	EN 10028-2
		P280GH / 1.0426	EN 10222-2
		P355NL1 / 1.0566	EN 10028-3
		16Mo3; 15Mo3 / 1.5415	EN 10222-2
	other stainless steel materials on request		
		AISI 304L (X2CrNiMo17-12-2) / 1.4404	EN 10222-5
		AISI 316L (X2CrNiMo17-12-2) / 1.4404	EN 10222-5
		AISI 321 (X6CrNiTi18-10) / 1.4541	EN 10222-5
		AISI 316Ti (X6CrNiMoTi17-12-2) / 1.4571	EN 10222-5

Specifications

Standart:	EN1092-1 01/B1
-----------	----------------

FLAT FLANGE TYPE 01/B1 EN1092-1 PN 25

Материал steel EN P245GH

Налягане PN 25

Размер DN 10 - 1000

Specifications	
Pressure Rating:	PN25

Dn	Pipe o.d.	Flange type 01/b1 en1092-1 pn25								Screws	
		A	B1	D	K	D1	F1	C1	L	Kg	N
10	13,5*	14	90	60	40	2	14	14	0,62	4	M12
	17,2	18							0,60		
15	20,0*	20,5	95	65	45	2	14	14	0,69	4	M12
	21,3	22,0							0,67		
20	25,0*	26	105	75	58	2	16	14	0,95	4	M12
	26,9	27,5							0,94		
25	30,0*	32	115	85	68	2	16	14	1,13	4	M12
	33,7	34,5							1,11		
32	38,0*	39	140	100	78	2	18	18	1,84	4	M16
	42,4	43,5							1,82		
40	44,5*	45,5	150	110	88	3	18	18	2,10	4	M16
	48,3	49,5							2,08		
50	57,0*	158	165	125	102	3	20	18	2,75	4	M16
	60,3	61,5							2,73		
65	76,1	77,5	185	145	122	3	22	18	3,48	8	M16
80	88,9	90,5	200	160	138	3	24	18	4,32	8	M16
100	108,0*	109	235	190	162	3	26	22	6,10	8	M20
	114,3	116							6,07		
125	133,0*	135	270	220	188	3	28	26	8,21	8	M24
	139,7	141,5							8,19		
150	159,0*	161	300	250	218	3	30	26	10,50	8	M24
	168,3	170,5							10,30		
200	219,1	221,5	360	310	278	3	32	26	14,30	12	M24
250	273,0	276,5	425	370	335	3	35	30	20,10	12	M27
300	323,9	327,5	485	430	395	4	38	30	26,60	16	M27
350	355,6	359,5	555	490	450	4	42	33	41,80	16	M30
400	406,4	411	620	550	505	4	48	36	57,60	16	M33
450	457,0	462	670	600	555	4	54	36	69,80	20	M33
500	508,0	513,5	730	660	615	4	58	36	87,00	20	M33

FLAT FLANGE TYPE 01/B1 EN1092-1 PN 25

Материал steel EN P245GH

Налягане PN 25

Размер DN 10 - 1000

Dn	Pipe o.d.	Flange type 01/b1 en1092-1 pn25								Screws	
		A	B1	D	K	D1	F1	C1	L	Kg	N
600	610,0	616,5	845	770	720	5	68	39	127,00	20	M36
700	711	*	960	875	820	5	85	42	-	24	M39
800	813	*	1085	990	930	5	95	48	-	24	M45
900	914	*	1185	1090	1030	5	*	48	-	28	M45
1000	1016	*	1320	1210	1140	5	*	56	-	28	M52

*) pipe diameters not provided for in EN 1092-1: 2013 standards - they can be made to customer's special order.