

FLAT FLANGE TYPE 01/B1 EN1092-1 PN 40

Материал steel EN P245GH

Налягане PN 40

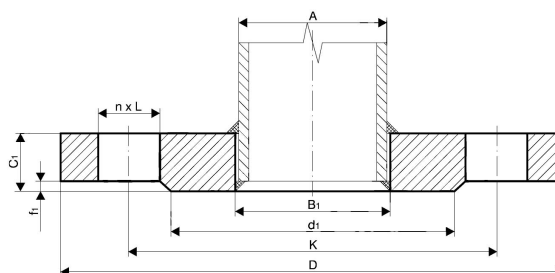
Размер DN 10 - 600

TECHNICAL DESCRIPTION

Flat flanges according to EN1092-1 / type 01 / B1 are one of the most common used pipe connection elements and are widely used in building of steel pipelines and pipe spools for industry, shipbuilding, ship repairs and many other branches.

Our stock availability consists of steel flanges according to EN1092-1 type 01 / with sealing surface B1 and sizes up to DN2000. We have all necessary machine equipment, that allows us to machine flanges with different profiles and sealing surfaces as follows.

- type of sealing surface A, B2, C, D, E, F
- non-standard sealing surfaces as per clients specification
- machining of profile channels for metal sealing rings type RTJ
- threaded type flanges
- custom machined flanges made by clients specification.



MATERIALS KEPTED ON STOCK:

- Carbon steel

P245GH (1.0352) / EN 10222-2

No.	Parts	Materials	Standart
1	FLANGE 01/B1 EN1092-1 PN40	carbon steel P245GH / (1.0352)	EN 10222-2
	other carbon steel materials on request		
		P245GH / 1.0352	EN 10222-2
		P265GH / 1.0425	EN 10028-2
		P280GH / 1.0426	EN 10222-2
		P355NL1 / 1.0566	EN 10028-3
		16Mo3; 15Mo3 / 1.5415	EN 10222-2
	other stainless steel materials on request		
		AISI 304L (X2CrNiMo17-12-2) / 1.4404	EN 10222-5
		AISI 316L (X2CrNiMo17-12-2) / 1.4404	EN 10222-5
		AISI 321 (X6CrNiTi18-10) / 1.4541	EN 10222-5
		AISI 316Ti (X6CrNiMoTi17-12-2) / 1.4571	EN 10222-5

Specifications	
Standart:	EN1092-1 01/B1

FLAT FLANGE TYPE 01/B1 EN1092-1 PN 40

Материал steel EN P245GH

Налягане PN 40

Размер DN 10 - 600

Specifications	
Pressure Rating:	PN40

Dn	Pipe o.d.	Flange type 01/b1 en1092-1 pn40								Screws	
		A	B1	D	K	D1	F1	C1	L	Kg	N
10	13,5*	14	90	60	40	2	14	14	0,62	4	M12
	17,2	18							0,60		
15	20,0*	20,5	95	65	45	2	14	14	0,69	4	M12
	21,3	22,0							0,67		
20	25,0*	26	105	75	58	2	16	14	0,95	4	M12
	26,9	27,5							0,94		
25	30,0*	32	115	85	68	2	16	14	1,13	4	M12
	33,7	34,5							1,11		
32	38,0*	39	140	100	78	2	18	18	1,84	4	M16
	42,4	43,5							1,82		
40	44,5*	45,5	150	110	88	3	18	18	2,10	4	M16
	48,3	49,5							2,08		
50	57,0*	58	165	125	102	3	20	18	2,75	4	M16
	60,3	61,5							2,73		
65	76,1	77,5	185	145	122	3	22	18	3,48	8	M16
80	88,9	90,5	200	160	138	3	24	18	4,32		M16
100	108,0*	109	235	190	162	3	26	22	6,10	8	M20
	114,3	116							6,07		
125	133,0*	135	270	220	188	3	28	26	8,21	8	M24
	139,7	141,5							8,19		
150	159,0*	161	300	250	218	3	30	26	10,50	8	M24
	168,3	170,5							10,30		
200	219,1	221,5	375	320	285	3	36	30	17,90	12	M27
250	273,0	276,5	450	385	345	3	42	33	29,30	12	M30
300	323,9	327,5	515	450	410		52	33	45,10	16	M30
350	355,6	359,5	580	510	465	4	58	36	66,70	16	M33
400	406,4	411	660	585	535	4	65	39	97,10	16	M36
450	457,0	462	685	610	560	4	*	39	-	20	M36
500	508,0	513,5	755	670	615	4	*	42	-	20	M39

FLAT FLANGE TYPE 01/B1 EN1092-1 PN 40

Материал steel EN P245GH

Налягане PN 40

Размер DN 10 - 600

Dn	Pipe o.d.	Flange type 01/b1 en1092-1 pn40								Screws	
		A	B1	D	K	D1	F1	C1	L	Kg	N
600	610,0	616,5	890	795	735	5	*	48	-	20	M45
*) pipe diameters not provided for in EN 1092-1: 2013 - can be made on customer's special request.											