

FLAT FLANGE TYPE 01/B1 EN1092-1 PN 6

Материал steel EN P245GH

Налягане PN 6

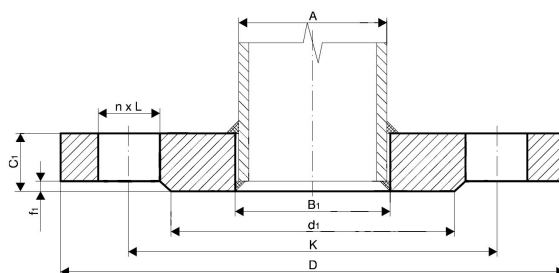
Размер DN 10 - 2000

TECHNICAL DESCRIPTION

Flat flanges according to EN1092-1 / type 01 / B1 are one of the most common used pipe connection elements and are widely used in building of steel pipelines and pipe spools for industry, shipbuilding, ship repairs and many other branches.

Our stock availability consists of steel flanges according to EN1092-1 type 01 / with sealing surface B1 and sizes up to DN2000. We have all necessary machine equipment, that allows us to machine flanges with different profiles and sealing surfaces as follows.

- type of sealing surface A, B2, C, D, E, F
- non-standard sealing surfaces as per clients specification
- machining of profile channels for metal sealing rings type RTJ
- threaded type flanges
- custom machined flanges made by clients specification.



MATERIALS KEPTED ON STOCK:

- Carbon steel

P245GH (1.0352) / EN 10222-2

No.	Parts	Materials	Standart
1	FLANGE 01/B1 EN1092-1 PN6	carbon steel P245GH / (1.0352)	EN 10222-2
	other carbon steel materials on request		
		P245GH / 1.0352	EN 10222-2
		P265GH / 1.0425	EN 10028-2
		P280GH / 1.0426	EN 10222-2
		P355NL1 / 1.0566	EN 10028-3
		16Mo3; 15Mo3 / 1.5415	EN 10222-2
	other stainless steel materials on request		
		AISI 304L (X2CrNiMo17-12-2) / 1.4404	EN 10222-5
		AISI 316L (X2CrNiMo17-12-2) / 1.4404	EN 10222-5
		AISI 321 (X6CrNiTi18-10) / 1.4541	EN 10222-5
		AISI 316Ti (X6CrNiMoTi17-12-2) / 1.4571	EN 10222-5

Specifications	
Standart:	EN1092-1 01/B1

FLAT FLANGE TYPE 01/B1 EN1092-1 PN 6

Материал steel EN P245GH

Налягане PN 6

Размер DN 10 - 2000

Specifications	
Pressure Rating:	PN6

Dn	Pipe	Flange type 01/b1 en1092-1 pn6								Screws	
		A	B1	D	K	D1	F1	C1	L	Kg	N
10	13,5*	14	75	50	35	2	12	11	0,36	4	M10
	17,2	18							0,36		
15	20,0*	20,5	80	55	40	2	12	11	0,41	4	M10
	21,3	22							0,40		
20	25,0*	26	90	65	50	2	14	11	0,60	4	M10
	26,9	27,5							0,59		
25	30,0*	32	100	75	60	2	14	11	0,74	4	M10
	33,7	34,5							0,72		
32	38,0*	39	120	90	70	2	16	14	1,20	4	M12
	42,4	43,5							1,16		
40	44,5*	45,5	130	100	80	3	16	14	1,40	4	M12
	48,3	49,5							1,35		
50	57,0*	58	140	110	90	3	16	14	1,50	4	M12
	60,3	61,5							1,48		
65	76,1	77,5	160	130	110	3	16	14	1,86	4	M12
80	88,9	90,5	190	150	128	3	18	18	2,95	4	M16
100	108,0*	109	210	170	148	3	18	18	3,30	4	M16
	114,3	116							3,26		
125	133,0*	135	240	200	178	3	20	18	4,40	8	M16
	139,7	141,5							4,31		
150	159,0*	161	265	225	202	3	20	18	4,80	8	M16
	168,3	170,5							4,76		
200	219,1	221,5	320	280	258	3	22	18	6,88	8	M16
250	273,0	276,5	375	335	312	3	24	18	8,92	12	M16
300	323,9	327,5	440	395	365		24	22	11,90	12	M20
350	355,6	359,5	490	445	415	4	26	22	16,80	12	M20
400	406,4	411	540	495	465	4	28	22	19,80	16	M20
450	457,0	462	595	550	520	4	30	22	24,60	16	M20
500	508,0	513,5	645	600	570	4	30	22	26,40	20	M20

FLAT FLANGE TYPE 01/B1 EN1092-1 PN 6

Материал steel EN P245GH

Налягане PN 6

Размер DN 10 - 2000

Dn	Pipe	Flange type 01/b1 en1092-1 pn6								Screws	
		A	B1	D	K	D1	F1	C1	L	Kg	N
600	610,0	616,5	755	705	670	5	32	26	34,80	20	M24
700	711,0	b	860	810	775	5	40	26	-	24	M24
800	813,0	b	975	920	880	5	44	30	-	24	M27
900	914,0	b	1075	1020	980	5	48	30	-	24	M27
1000	1016,0	b	1175	1120	1080	5	52	30	-	28	M27
1200	1219,0	b	1405	1340	1295	5	60	33		32	M30
1400	1422,0	b	1630	1560	1510	5	72	36	-	36	M33
1600	1626,0	b	1830	1760	1710	5	80	136		40	M33
1800	1829,0	b	2045	1970	1920	5	88	39	-	44	M36
2000	2032,0	b	2265	2180	2125	5	96	42		48	M39
*) pipe diameters not provided for in EN 1092-1: 2013 standards - they can be made to customer's special order.											
b) After agreement with ordering party											