

FLAT FLANGE TYPE 01/B1 EN1092-1 PN 63

Материал steel EN P245GH

Налягане PN 63

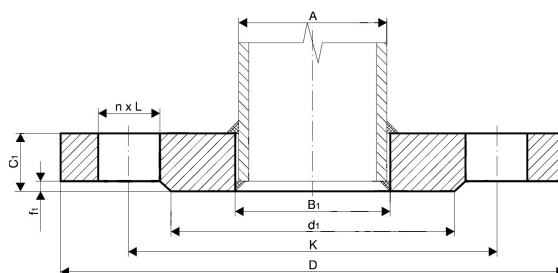
Размер DN 10 - 400

TECHNICAL DESCRIPTION

Flat flanges according to EN1092-1 / type 01 / B1 are one of the most common used pipe connection elements and are widely used in building of steel pipelines and pipe spools for industry, shipbuilding, ship repairs and many other branches.

Our stock availability consists of steel flanges according to EN1092-1 type 01 / with sealing surface B1 and sizes up to DN2000. We have all necessary machine equipment, that allows us to machine flanges with different profiles and sealing surfaces as follows.

- type of sealing surface A, B2, C, D, E, F
- non-standard sealing surfaces as per clients specification
- machining of profile channels for metal sealing rings type RTJ
- threaded type flanges
- custom machined flanges made by clients specification.



MATERIALS KEPTED ON STOCK:

- Carbon steel

P245GH (1.0352) / EN 10222-2

No.	Parts	Materials	Standart
1	FLANGE 01/B1 EN1092-1 PN63	carbon steel P245GH / (1.0352)	EN 10222-2
	other carbon steel materials on request		
		P245GH / 1.0352	EN 10222-2
		P265GH / 1.0425	EN 10028-2
		P280GH / 1.0426	EN 10222-2
		P355NL1 / 1.0566	EN 10028-3
		16Mo3; 15Mo3 / 1.5415	EN 10222-2
	other stainless steel materials on request		
		AISI 304L (X2CrNiMo17-12-2) / 1.4404	EN 10222-5
		AISI 316L (X2CrNiMo17-12-2) / 1.4404	EN 10222-5
		AISI 321 (X6CrNiTi18-10) / 1.4541	EN 10222-5
		AISI 316Ti (X6CrNiMoTi17-12-2) / 1.4571	EN 10222-5

Specifications	
Standart:	EN1092-1 01/B1

FLAT FLANGE TYPE 01/B1 EN1092-1 PN 63

Материал steel EN P245GH

Налягане PN 63

Размер DN 10 - 400

Specifications	
Pressure Rating:	PN63

Dn	Pipe o.d.	Flange type 01/b1 en1092-1 pn63								Screws	
		B1	D	K	d1	f1	C1	L	Weight kg	n	Size
10	13,5*	14	100	70	40	2	20	14	1,02	4	M12
	17,2	18							1,00		
15	20,0*	20,5	105	75	45	2	20	14	1,11	4	M12
	21,3	22,0							1,10		
20	25,0*	26	130	90	58	2	22	18	1,87	4	M16
	26,9	27,5							1,86		
25	30,0*	32	140	100	68	2	24	18	2,39	4	M16
	33,7	34,5							2,36		
32	38,0*	39	155	110	78	2	24	22	2,84	4	M20
	42,4	43,5							2,79		
40	44,5*	45,5	170	125	88	3	26	22	3,63	4	M20
	48,3	49,5							3,57		
50	57,0*	158	180	135	102	3	26	22	4,94	4	M20
	60,3	61,5							4,90		
65	76,1	77,5	205	160	122	3	26	22	4,72	8	M20
80	88,9	90,5	215	170	138	3	30	22	5,88	8	M20
100	108,0*	109	250	200	162	3	32	26	8,34	8	M24
	114,3	116							8,03		
125	133,0*	135	295	240	188	3	34	30	12,08	8	M27
	139,7	141,5							11,71		
150	159,0*	161	345	280	218	3	36	33	17,56	8	M30
	168,3	170,5							16,86		
200	219,1	221,5	415	345	285	3	48	36	30,44	12	M33
250	273,0	276,5	470	400	345	3	55	36	42,09	12	M33
300	323,9	327,5	530	460	410	4	65	136	58,98	16	M33
350	355,6	359,5	600	525	465	4	72	39	88,64	16	M36
400	406,4	411	670	585	535	4	80	42	120,80	16	M39

*) pipe diameters not provided for in EN 1092-1: 2013 - can be made on customer's special request.