

FLOAT STEAM TRAP SCREW END / FLANGED ADCA FLT 32

Материал cast steel 1.0619

Налягане PN 16-40

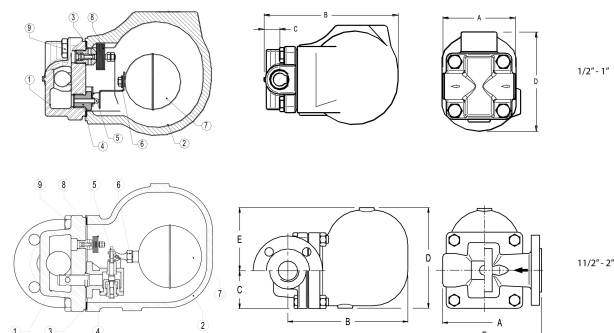
Размер 1/2" - 2"

TECHNICAL DESCRIPTION

The FLT32 float steam trap (with automatic air release) are designed to work with many and different types of low and high pressure steam systems.

Typical applications includes preheaters, heat exchangers, dryers, pressure vessels and other applications where continuous drainage of the system is required.

Connection can be threaded or flanged and suitable for horizontal or vertical installations.



Maximum differential pressure:

FLT32-4,5: 4,5 bar

FLT32- 10: 10 bar

FLT32- 14: 14 bar

FLT32- 21: 21 bar

OPERATION

Controlled unloading.

Drains condensate with near temperature to steam.

Not affected by sudden changes in system load and pressure.

Excellent deaeration (via thermostatic air vent)

Upon request:

- Horizontal right-to-left (L-R) fluid installation
- Vertical installation with direction of the fluid from top to bottom (V)

WORKING FLUIDS / MEDIA

Saturated and superheated steam.

OPTIONS

- Model with raised covers (HC)
- SLR (Release Steam Lock)
- Integrated internal filter element
- Vertical installation with fluid direction from top to bottom
- Thermostatic deaerator

FLOAT STEAM TRAP SCREW END / FLANGED

ADCA FLT 32

Материал cast steel 1.0619

Налягане PN 16-40

Размер 1/2" - 2"

N°	Position	Materials	Specification	
			Standard	DIN
1	Body	стомана EN GP240GH / 1.0619	Standard	DIN
2	Cover	стомана EN GP240GH / 1.0619		
3	Cover seliang	stainless steel / graphite	Connection standard	threaded BSPP / flanged EN1092-2, ANSI #150 - 300
4.1	Seat DN15 to DN25	stainless steel AISI 410 / 1.4006	Cover connection	bolted
4.2	Seat DN40 to DN50	stainless steel CF8 / 1.4308	Construction	straight
5.1	Disc	stainless steel AISI 440C / 1.4125	Actuation	automatic with automatic air release
5.2	disc	stainless steel AISI 420C / 1.4021	Max. differential pressure	4,5; 10; 14; 21 Bar
6	Rod	stainless steel AISI 304 / 1.4301	Mounting	horizontal / vertical
7	Float	stainless steel AISI 304 / 1.4301		
8	Automatic airrelease	stainless steel (bimetal)		
9	Bolt	steel 8.8		

Flow capacity (kg/h)																
MODEL	SIZE	DIFFERENTIAL PRESSURE (bar)														
		0,5	1	1,5	2	3	4,5	6	7	8	9	10	12	14	16	21
FLT32-4,5	15-25	230	330	400	440	535	630	-	-	-	-	-	-	-	-	-
FLT32-10	15-25	150	200	250	280	340	400	460	495	520	550	595	-	-	-	-
FLT32-14	15-25	120	150	190	220	260	320	380	400	425	440	480	510	550	-	-
FLT32-21	15-25	60	80	90	115	135	160	190	200	220	230	240	260	270	290	300
FLT32-4,5	40-50	2400	3400	3900	4500		7300		-			-	-	-	-	-
FLT32-10	40-50	1500	2000	2600	3000		4000		5400			6200	-	-	-	-
FLT32-14	40-50	950	1300	1600	1800		2600		3250			3900	4210	4950	-	-
FLT32-21	40-50	950	1300	1600	1800		2600		3250			3900	4210	4950	5000	5600

Dimensions (mm)															
THREADED							EN PN16/40	ANSI 150 lb		ANSI 300 lb		ANSI 300 lb			
THREADED	A	B	C	D	E	(kg)	F	(kg)	F	(kg)	F	(kg)	F	B	(kg)
1/2" - DN 15	95	178	23	128	-	5,2	150	6,7	150	6,2	150	7	-	-	-
3/4" - DN 20	95	178	23	128	-	5,2	150	7,4	150	6,6	150	8,2	-	-	-
1" - DN 25	95	178	23	128	-	5,2	160	7,8	160	7,4	160	9	-	-	-
1 1/2" - DN 40	210	248	79	208	131	16,9	230	248	20,3	230	248	19,1	230	248	22,1

FLOAT STEAM TRAP SCREW END / FLANGED
ADCA FLT 32

Материал cast steel 1.0619

Налягане PN 16-40

Размер 1/2" - 2"

Dimensions (mm)															
2" - DN 50	210	248	79	208	131	17,5	230	248	20,7	230	248	20,5	230	248	22,3

Max. working pressure (bar) / °c	-10/100 °c	200 °c	250 °c	300 °c	[°c]
PN 40	37,1	33,3	30,4	27,6	[bar]
PMO - max. working pressure				32	[bar]
TMO - max. working temperature				250 °C	[°C]
max. differential pressure				4.5	[bar]