

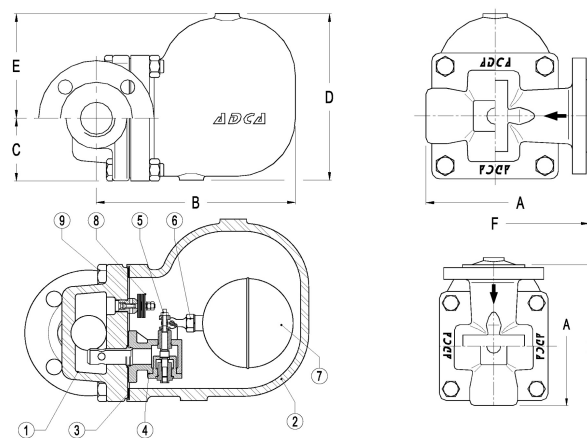
FLOAT STEAM TRAP SCREW ENDS / FLANGED

ADCA FLT 14I - DN 40-50

Материал stainless steel 1.4408

Налягане PN 16

Размер DN 40 - 50



| No. | Part | Material |
|-----|----------|----------------------------|
| 1 | Body | CF8M / 1.4408 |
| 2 | Cover | CF8M / 1.4408 |
| 3 | Gasket | Stainless st./Graphite |
| 4 | Seat | AISI 410 / 1.4006 |
| 5 | Valve | AISI 440C / 1.4125 |
| 6 | Lever | AISI 304 / 1.4301 |
| 7 | Float | AISI 304 / 1.4301 |
| 8 | Air vent | Stainless st. (Bimetallic) |
| 9 | Bolts | St.Steel A2-70 |

| Specifications | |
|---------------------|----------------------------|
| Building standards: | DIN |
| Connection: | Flanged DN40-50 |
| Bonnet connection: | Bolted |
| Execution: | Straight |
| Operation: | Automatic |
| | With automatic air release |
| Mounting: | Horizontal / Vertical |
| Mximum Differentla | 4,5 ; 10 ; 14 Bars |
| Pressure | |

FLOAT STEAM TRAP SCREW ENDS / FLANGED
ADCA FLT 14I - DN 40-50

Материал stainless steel 1.4408

Налягане PN 16

Размер DN 40 - 50

| Dn | A | B | C | D | E | F | Weight (kg) |
|---------------|----------|----------|----------|----------|----------|----------|--------------------|
| DN40 / 1 1/2" | 120 | 195 | 80 | 190 | 110 | 230 | 20.3 |
| DN50 / 2" | 210 | 248 | 79 | 208 | 131 | 230 | 20.7 |