

FORGED GLOBE VALVES FLANGED ANSI #600

Материал steel ASTM A105N

Налягане 600 Lbs

Размер DN 15 - 50 ; 1/2" - 2"

DESCRIPTION

Forged steel globe valves flanged ASME Class # 600, API trim # 1; triple # 5 and triple # 8, straight, with flange fitting ANSI 16.5 ("smooth surface buckwheat"), reduced passage, pulling spindle

WORKING FLUID / MEDIA

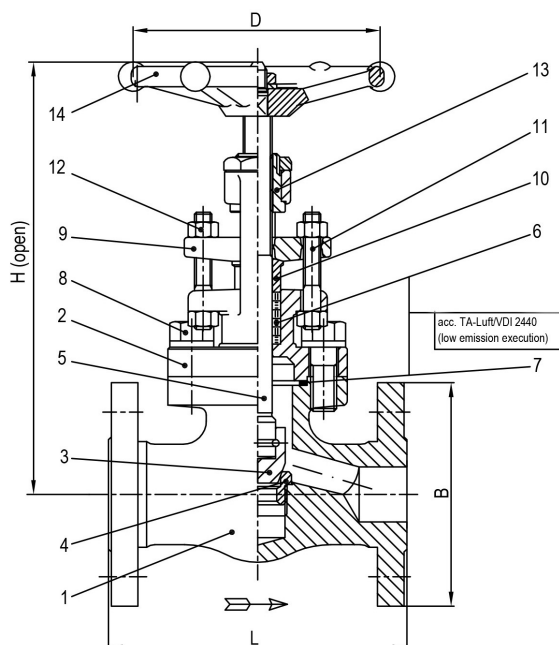
Water, steam, oils, fuels, gases and gas vapours

CONSTRUCTION DETAILS

Design BS 5352

OPTIONS

- Different stem materials, disc and seat
- Higher pressure rating
- Materials for higher or sub zero temperatures
- Trim #1 (available on stock), other trim types on request



No.	Parts	Materials	Specification	
			Standard	BS 5352
1	Body	steel ASTM A105N (1.0460)	Standard	BS 5352
2	Bonnet	steel (1.0460)	Connection	flanged B16.5
3	Disc	13Cr	Face to Face length	ASME B16.10
4	Seat	trim #1; #5 ; #8	Bonnet connection	bolted
5	Stem	steel 13Cr	Body construction	straight
6	Gland packing	graphite	Operation	manual
7	Gasket	graphite / st. steel 1.4401	Actuation	multiturn
8	Bolts	21CrMoV5-7	T max. °C	426 °C
9	Gland flange	A105N (1.0460)		
10	Gland bush	13Cr		
11	Bolts	A2-70		
12	Nuts	A2-70		
13	Stem nut	13Cr		
14	Wheel	cast iron or steel		

Regulating range of temperature and pressure

FORGED GLOBE VALVES FLANGED ANSI #600

Материал steel ASTM A105N

Налягане 600 Lbs

Размер DN 15 - 50 ; 1/2" - 2"

Regulating range of temperature and pressure												
T°	-29÷38 °C	100 °C	150 °C	200 °C	250 °C	300 °C	350 °C	375 °C	400 °C	425 °C	450 °C	500 °C
Bar	18,6	17,7	15,8	13,8	12,1	10,2	8,4	7,4	6,5	5,5	4,6	2,4
ASTM A105N is not recomendet for temperatures above 426 °C												
acc. ASME B16.34												

Dn	Pn	Flange conn./py	L	H	D	B	Weight (kg)
15	600 lbs	ANSI #600	165	176,5	88	95,5	4,4
20	600 lbs	ANSI #600	191	202	88	117,5	6,2
25	600 lbs	ANSI #600	216	234	97	124	8,7
40	600 lbs	ANSI #600	241	283	138	155,5	16,5
50	600 lbs	ANSI #600	292	321	172	165	23,6