

## LEVEL GAUGES FOR STEAM BOILERS

Материал steel / Borosilicate glass

Налягане (0.0 - 16) Bar

Размер DN 20 - DN 25

### APPLICATIONS

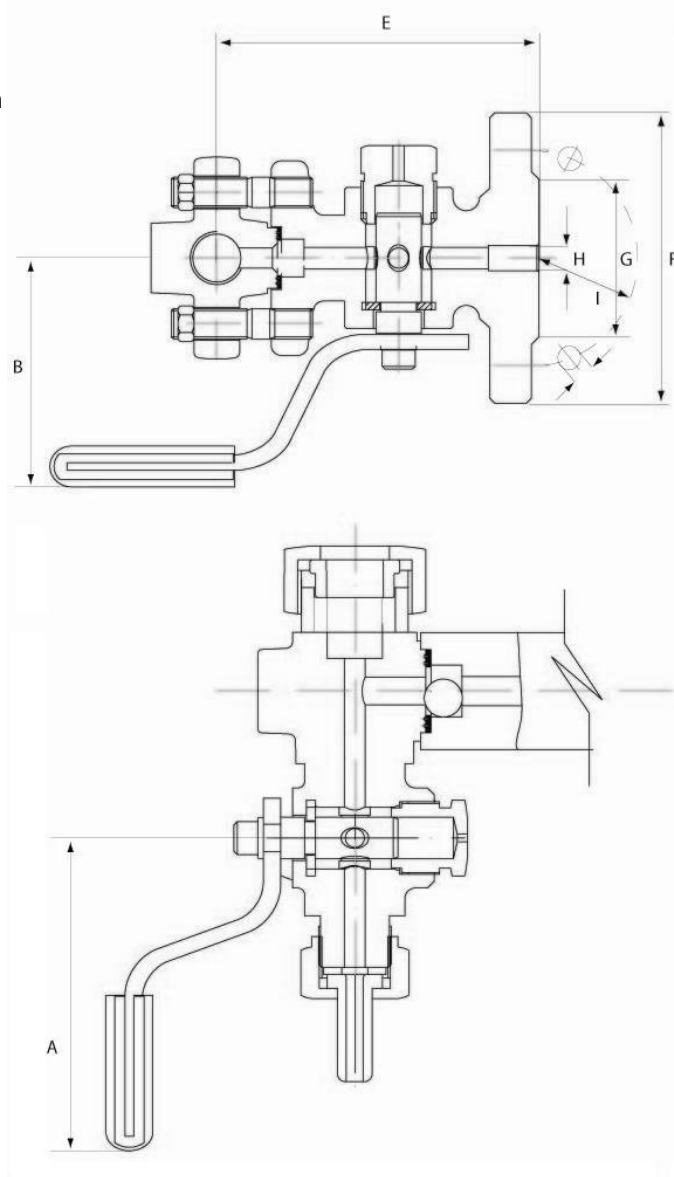
Level Gauge performed with reflexglass. Suitable for steam and water applications primarily on steam boilers. Gauge glass is used in combination with top and bottom valves

### Specials:

- Longer center to center distances by combining bodies
- Entirely in stainless steel

### VARIANTS

According to dimensional table



No.	Part	Material
1	Body	Carbon steel 1.0619
2	Packing	Graphite
3	Section material	1.0619+N
4	Glass	Borosilicate
5	Pipe	Carbon steel 1.0619
6	Bolts	Carbon steel 1.0619

## LEVEL GAUGES FOR STEAM BOILERS

Материал steel / Borosilicate glass

Налягане (0.0 - 16) Bar

Размер DN 20 - DN 25

Specifications	
Standart:	DIN
Press / Temp range:	Max. pressure 22 barg, Max. working temperature 216 degrees Celcius.

Dimensions:									
Body size	1	2	3	4	5	6	7	8	9
Min. CTC distance [mm]	235	260	285	310	340	370	400	440	460
Diameter pipe connection [mm]	16	16	16	16	16	16	16	16	16
Length reflex body [mm]	128	153	178	203	233	263	293	333	353
Visible glass length [mm]	93	118	143	168	198	228	258	298	318
Total glass length [mm]	115	140	165	190	220	250	280	320	340
Glass width [mm]	34	34	34	34	34	34	34	34	34
Weight [kg]	2,4	2,8	3,3	3,8	4,3	4,9	5,4	6,1	6,6