

LONG DOUBLE NIPPLE ISO 7-1 EN10241 tabl. 23C

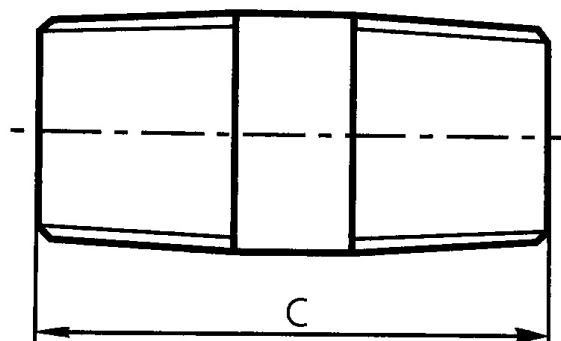
Материал steel P265GH , A234WPB
 Налягане 25 Bar
 Размер G 1/4" - 4"

APPLICATIONS

Long nipple is a connecting piece that enables connection of equal diameters threaded pipes. It connects two pipes of the same diameters.

VARIANTS

Other materials: Ferritic and Austenitic steels



No.	Part	Material
1	Nipple long	P265GH, A234 gr.WPB

Specifications	
Standart:	EN10241
Thread type:	ISO 7-1
Pressure Rating:	25 Bar

Dn	Size	C	Tolerance
8	1/4"	38	+3,0
10	3/8"	38	+3,0
15	1/2"	51	+4,5
20	3/4"	54	+4,5
25	1"	60	+4,5
32	1 1/4"	70	+6,0
40	1 1/2"	70	+6,0
50	2"	79	+8,0
65	2 1/2"	89	+8,0
80	3"	102	+8,0
100	4"	114	+8,0