

NIPPLE EN10241 ТАБЛ. 14

Материал steel P265GH , A234WPB

Налягане 25 Bar

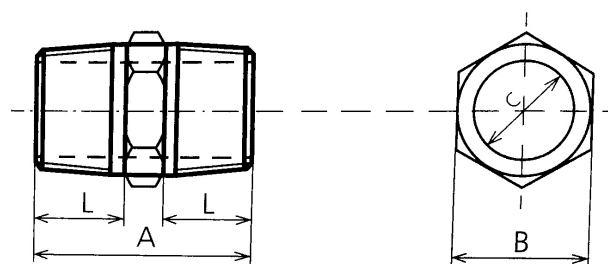
Размер G 1/8" - 3"

APPLICATIONS

Nipple is a connecting piece that enables connection of equal diameters threaded pipes. It connects two pipes of the same or different diameters.

VARIANTS

Other materials: Ferritic and Austenitic steels



No.	Part	Material
1	Nipple	P265GH, A234 gr.WPB

Specifications	
Standart:	EN10241
Thread type:	ISO 7-1
Pressure Rating:	25 Bar

Dn	Dim.	L (min)	T	A	C		B
					Min.	Max.	
6	1/8"	9,5	6	25	4,5	6,0	12
8	1/4"	12,5	6	31	6,5	8,0	14
10	3/8"	12,5	8	33	8,5	10,5	17
15	1/2"	17,5	8	43	11,5	13,0	22
20	3/4"	19,0	10	48	18,0	21,0	27
25	1"	21,0	10	52	24,0	26,0	36
32	1 1/4"	24,0	11	59	30,0	32,0	46
40	1 1/2"	24,0	13	61	37,0	39,0	50
50	2"	27,0	14	68	48,0	51,0	65
65	2 1/2"	32,0	16	80	62,0	66,0	78
80	3"	35,0	19	89	75,0	79,0	90