

STAINLESS STEEL BALL VALVE FLANGED 3 PARTS • DIN PN 16

Материал stainless steel 1.4541
 Налягане PN 16
 Размер DN-65-100

DESCRIPTIONS

Ball valve is mainly used as shut off in liquid systems where it is a need for high flow. Quarterturn operation. Full bore. Three piece bolted. Top flange according to ISO 5211. Anti-static stem.

APPLICATION

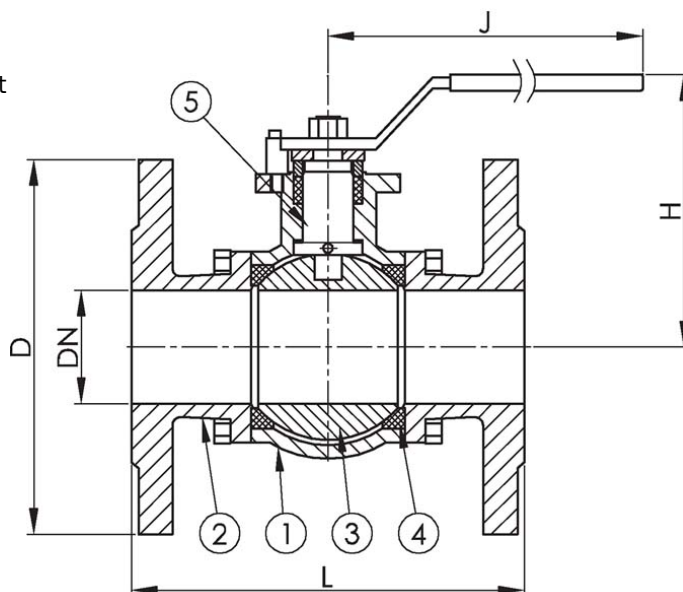
- Corrosive fluids. Fuel oil, lubricating oil and flammable hydraulic oil. Cargo oil. Air. Gas. Non-flammable hydraulic fluid.
 - Boiler feedwater, condensate. Seawater and freshwater.

VARIANTS

Other materials on request.

OPTIONS

Relief hole on ball



No.	Part	Material	Specifications	
1	Body	Stainless steel 1.4541 (AISI321)	Standart:	DIN 3202 F1
2	Cap	Stainless steel 1.4541 (AISI321)	Flange standard:	EN1092-2
3	Ball	Stainless steel 1.4541 (AISI321)	Face to face standard:	EN558, Series 1
4	Seat	PTFE	Execution:	Straight
5	Stem	Stainless steel 1.4408 (AISI316)	Connection type:	Flanged
			Operation:	Lever
			Actuation:	quarterturn
			Tmax	120 °C

Max. working pressure (bar) at °c				
Dn	38°c	100°c	150°c	180°c
15 - 100	40	24	12	3

Dn	Pressure rating	Connection	L	D	P	N x d	H	J	Weight (kg)
65	16	16	290	185	145	4 x 18	178	290	16
80	16	16	310	200	160	8 x 18	185	290	21
100	16	16	350	220	180	8 x 18	183	285	36