

# STAINLESS STEEL BALL VALVE SOCKET WELD

## 3 PARTS • DIN PN 40

Материал stainless steel 1.4541

Налягане PN 40

Размер DN 15 - 25

### DESCRIPTIONS

Ball valve is mainly used as shut off in liquid systems where it is a need for high flow. Quarterturn operation. Full bore. Three piece bolted. Top flange according to ISO 5211. Anti-static stem.

### APPLICATION

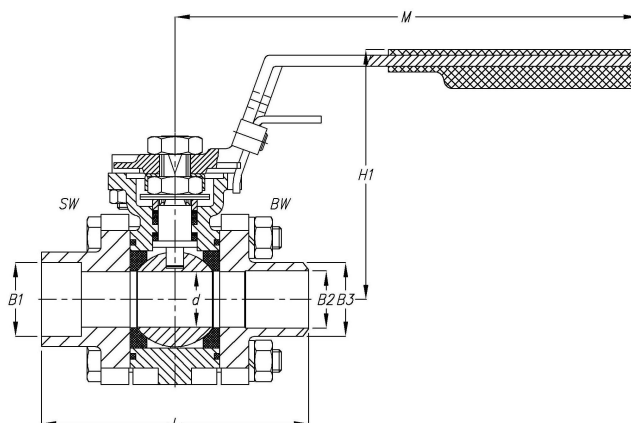
- Corrosive fluids. Fuel oil, lubricating oil and flammable hydraulic oil. Cargo oil. Air. Gas. Non-flammable hydraulic fluid.  
- Boiler feedwater, condensate. Seawater and freshwater.

### VARIANTS

Other materials on request.

### OPTIONS

Butt weld connection



Part	Material	Specifications	
Body	Stainless steel 1.4541 (AISI321)	Standart:	DIN 3202 F1
Cap	Stainless steel 1.4541 (AISI321)	Flange standard:	EN1092-2
Ball	Stainless steel 1.4541 (AISI321)	Face to face standard:	EN558, Series 1
Seat	PTFE	Execution:	Straight
Stem	Stainless steel 1.4408 (AISI316)	Connection type:	Socket Weld DIN3239-2
		Operation:	Lever
		Actuation:	Quarterturn 90°
		Tmax	120 °C

Max. working pressure (bar) at °c			
Dn	100°c	150°c	180°c
15 - 25	24	12	3

Dn	D	H	F	H1	L	Butt weld reduced port	Butt weld full port	Socket weld	M	Weight			
						B3	B2	Red	Full				
								B1	B1				
[mm]										[kg]			
15	12,7	35	11	77	67	21,3	15,8	17,1	12,5	22,4	17,5	120	0,7

# STAINLESS STEEL BALL VALVE SOCKET WELD 3 PARTS • DIN PN 40

Материал stainless steel 1.4541

Налягане PN 40

Размер DN 15 - 25

Dn	D	H	F	H1	L	Butt weld reduced port		Butt weld full port		Socket weld		M	Weight
						<b>B3</b>	<b>B2</b>	<b>B3</b>	<b>B2</b>	<b>Red</b>	<b>Full</b>		
										<b>B1</b>	<b>B1</b>		
<b>[mm]</b>												<b>[kg]</b>	
20	15	40	12	82	72	26,7	21	21,3	15,8	27,4	22,4	135	0,9
25	20	46	14	90	97	33,4	26,6	26,7	21	34,2	27,4	170	1,5