

STEEL FORGED ELBOW SW 90° ANSI B16.11

Материал steel A105

Налягане 3000 LBS

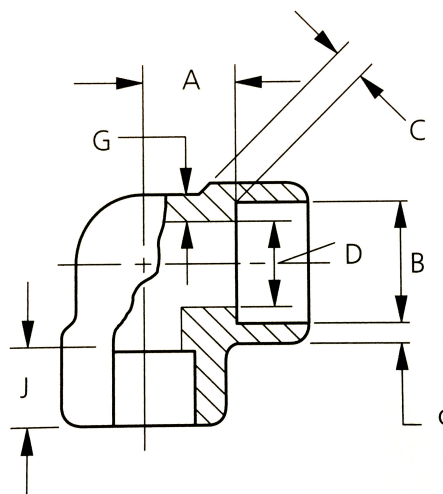
Размер 1/2" - 2"

APPLICATIONS

An elbow is a connecting piece with a specific bending radius used to connect two pipes of the same diameter.

VARIANTS

Other materials: Ferritic and Austenitic steels



No.	Part	Material
1	Elbow	Carbon steel A105

Specifications	
Standart:	ANSI B16.11
Pressure Rating:	3000 LBS

Dn	Nom. dn dia.	B (socket bore dia.) mm	D (bore dia. of fittings) mm	C (average socket wall thickn.) mm	A (center of bottom of socket) mm	G (min. body wall) mm	J (min. depth, of socket) mm	Kg stk/ ea.
15	1/2"	22,2/21,8	16,6/15	4,67	15,5	3,73	9,50	0,195
20	3/4"	27,6/27,2	21,7/20,2	4,90	19,0	3,91	12,50	0,280
25	1"	34,3/33,9	27,4/25,9	5,69	22,5	4,55	12,50	0,460
32	1 1/4"	43,1/42,7	35,8/34,3	6,07	27,0	4,85	12,50	0,650
40	1 1/2"	49,2/48,8	41,6/40,1	6,35	32,0	5,08	12,50	0,960
50	2"	61,7/61,2	53,3/51,7	6,93	38,0	5,54	16,00	1,500