

STEEL FORGED THREADED ELBOW NPT 45° ANSI B16.11

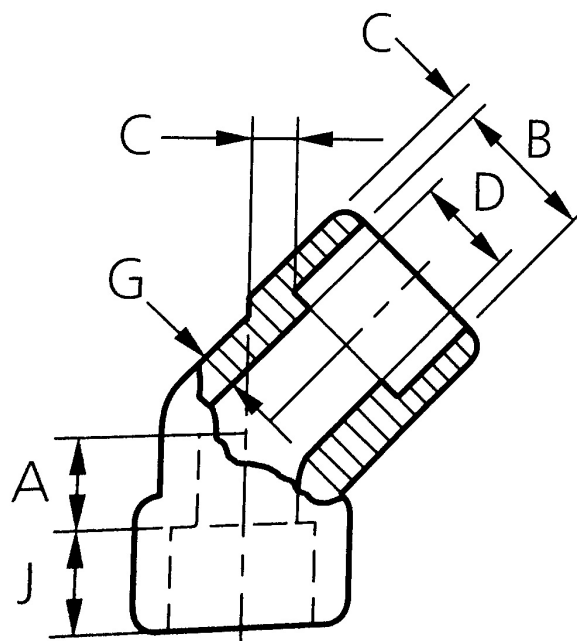
Материал steel A105
Налягане 3000 LBS
Размер G1/2" - G2"

APPLICATIONS

"An threaded elbow is a connecting piece with a specific bending radius and female threads used to connect two pipes of the same diameter."
"

VARIANTS

Other materials: Ferritic and Austenitic steels



No.	Part	Material
1	Elbow	Carbon steel A105

Specifications	
Standart:	ANSI B16.11
Pressure Rating:	3000 LBS
Thread standard:	NPT

Dn	Nom. dia.	A mm	H mm	G (min. wt.) mm	Min. length of thread B mm	L2 mm	Kg
15	1/2"	25	38	4,09	10,9	13,6	0,305
20	3/4"	28	46	4,32	12,7	13,9	0,49
25	1"	33	56	4,98	14,7	17,3	0,84
32	1 1/4"	35	62	5,28	17,0	18,0	1,02
40	1 1/2"	43	75	5,56	17,8	18,4	1,70
50	2"	44	84	7,14	19,0	19,2	2,56