

# STEEL FORGED THREADED ELBOW NPT 90° ANSI B16.11

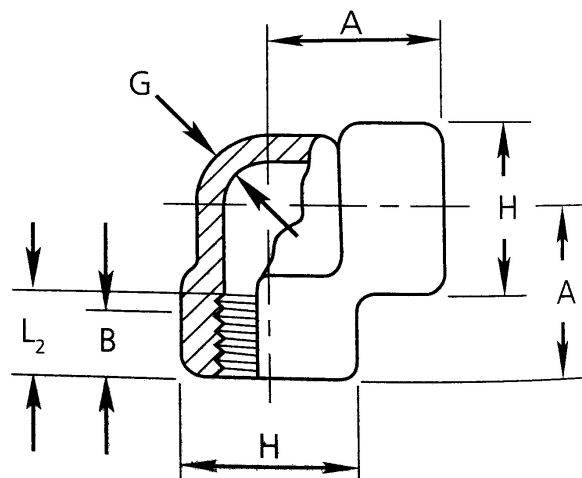
Материал steel A105  
Налягане 3000 LBS  
Размер G1/2" - G2"

## APPLICATIONS

An threaded elbow is a connecting piece with a specific bending radius and female threads used to connect two pipes of the same diameter.

## VARIANTS

Other materials: Ferritic and Austenitic steels



No.	Part	Material
1	Elbow	Carbon steel A105

Specifications	
Standart:	ANSI B16.11
Pressure Rating:	3000 LBS
Thread standard:	NPT

Dn	Nom. dia.	A mm	H mm	G (min. wt.) mm	A (center of bottom of socket) mm	L2 mm	Kg
10	3/8"	28	33	3,51	9,1	10,4	0,235
15	1/2"	33	38	4,09	10,9	13,6	0,390
20	3/4"	38	46	4,32	12,7	13,9	0,570
25	1"	44	56	4,98	14,7	17,3	0,990
32	1 1/4"	51	62	5,28	17,0	18,0	1,250
40	1 1/2"	60	75	5,56	17,8	18,4	2,130
50	2"	64	84	7,14	19,0	19,2	3,300