

# STEEL FORGED THREADED SOCKET NPT ANSI B16.11

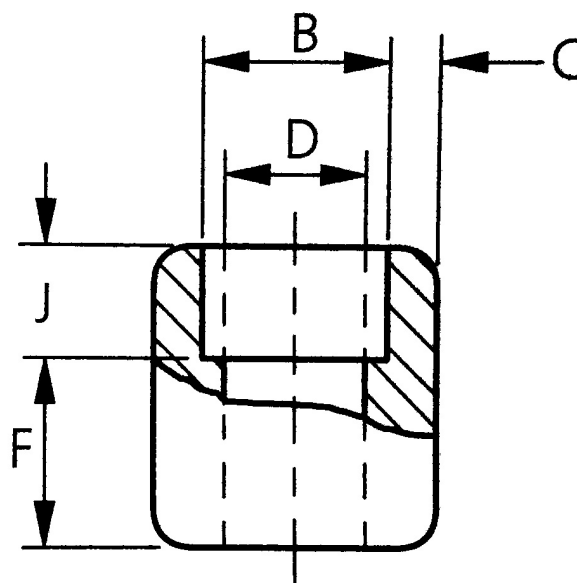
Материал steel A105  
 Налягане 3000 LBS  
 Размер G1/2" - G2"

## APPLICATIONS

A socket is a connecting piece that enables connection of equal diameters pipes. It connects two pipes of the same or different diameters. We differentiate between equal and reduced sockets.

## VARIANTS

Other materials: Ferritic and Austenitic steels



No.	Part	Material
1	Elbow	Carbon steel A105

Specifications	
Standart:	ANSI B16.11
Pressure Rating:	3000 LBS

Dn	Nom. dn dia.	B (socket bore dia.) mm	D (bore dia. of fittings) mm	C (average socket wall thicken.) mm	J (min. depth, of socket) mm	E (laying lenght)	Kg stk/ ea.
15	1/2"	22,2/21,8	16,6/15	4,67	9,50	9,5	0,14
20	3/4"	27,6/27,2	21,7/20,2	4,90	12,50	9,5	0,17
25	1"	34,3/33,9	27,4/25,9	5,69	12,50	12,5	0,27
32	1 1/4"	43,1/42,7	35,8/34,4	6,07	12,50	12,5	
40	1 1/2"	49,2/48,8	41,6/40,1	6,35	12,50	12,5	0,60
50	2"	61,7/61,2	53,3/51,7	6,93	16,00	19,0	