

THERMOSTATIC STEAM TRAP WITH AIR RELEASE SCREW ENDS / FLANGED ADCA TH35/2 - TH35/3

Материал cast steel P250GH / 1.0460

Налягане PN 40

Размер 1" / DN 25

GENERAL DESCRIPTION

Thermostatic TH35 steam traps with air release series are specially designed to integrate in industrial equipment such as sterilizers, food processing equipment, laundry equipment and chemical industry. Two types of connections - threaded or flanged.

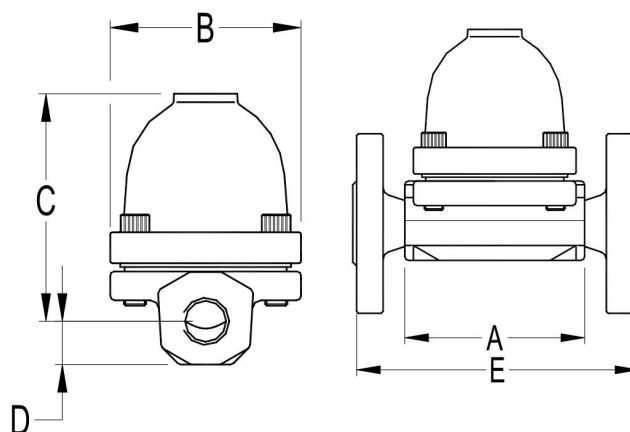
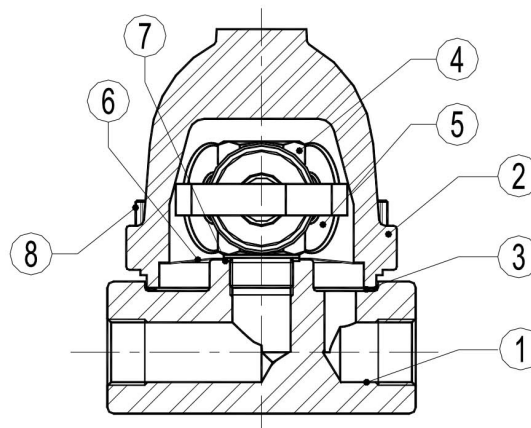
- Controlled unloading.
- With the possibility of draining condensate with a temperature close to that of the steam.
- Excellent bleeding.
- Work with moderately steamed steam.
- Built-in filter.

MEDIA

- Overheated steam

OPTIONS

- Stainless construction
- TH32 / 2 - 2 capsules
- TH32 / 3 - 3 capsules



No.	Part	Material
1	Body	P250GH / 1.0460
2	Cover	P250GH / 1.0460
3	Gasket	StainlessSt./Graphite
4	Valve Seat	AISI 304 / 1.4301
5	Thermostatic element	St.Steel
6	Strainer screen	AISI 304 / 1.4301
7	Gasket	Copper
9	Bolts	8.8

Specifications

**THERMOSTATYC STEAM TRAP WITH AIR
RELEASE SCREW ENDS / FLANGED ADCA
TH35/2 - TH35/3**

Материал cast steel P250GH / 1.0460

Налягане PN 40

Размер 1" / DN 25

Specifications	
Building standards:	DIN/ANSI
Connection:	Threaded BSP / Flanged
Bonnet connection:	Bolted bonnet
Execution:	Straight
Operation:	Automatic
Air release:	With automatic air release
Mounting:	Preffered horisontal
MAX. WORKING PRESSURE (BAR) AT	°C
PMO - maximum operating pressure	22 [bar]
Minimum operating pressure	0.25 [bar]
TMO - maximum operating temperature	250 [°C]

Body limiting conditions		
FLANGED PN40 / ANSI 300	FLANGED ANSI #150	Related temp
Allow. Press. / Bars	Allow. Press. / Bars	0C
40 bar	19,3 bar	50 °C
35 bar	15,8 bar	150 °C
30,4 bar	12,1 bar	250 °C
27,6 bar	10,2 bar	300 °C

Flow rate capacity in kg/h																	
MODEL	SIZE DN	DIFFERENTIAL PRESSURE (bar)															
		0.2	0.3	0.5	1	1.5	2	3	4	6	8	10	13	15	20	22	
TH35/2	25-1"	140	240	280	510	660	770	910	1020	1200	1340	1400	1440	1500	1550	1590	
TH35/3	25-1"	210	360	420	765	990	1155	1365	1530	1800	2010	2100	2160	2250	2325	2385	

Dimensions (mm)														
Screw and SW *						EN PN16/PN40			ANSI 150			ANSI 300		
SIZE DN	A	B	C	D	WGT. Kg	E		WGT. Kg	E		WGT. Kg	E	WGT. Kg	
25-1"	95	98	103	20	2.8	160		5.4	160		5	160	6.6	