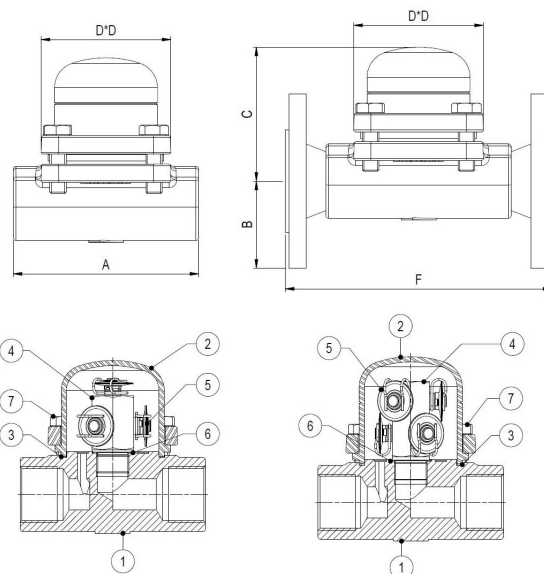


THERMOSTATIC STEAM TRAP WITH AIR RELEASE SCREW ENDS / FLANGED ADCA TH36

Материал cast steel P250GH / 1.0432

Налягане PN 100

Размер 1 1/2" - 2" / DN 40 - 50



No.	Part	Material
1	Body	P250GH / 1.0460
2	Cover	P250GH / 1.0460
3	Gasket	StainlessSt./Graphite
4	Valve Seat	AISI 304 / 1.4301
5	Thermostatic element	St.Steel
6	Seat Gasket	Copper
7	Bolts	8.8

Building standards:	Din/ansi
Connection:	Threaded BSP / Flanged
Bonnet connection:	Bolted bonnet
Execution:	Straight
Operation:	Automatic
Air release:	With automatic air release
Mounting:	Preffered horisontal

Max. working pressure (bar) at ?c				

THERMOSTATIC STEAM TRAP WITH AIR RELEASE SCREW ENDS / FLANGED ADCA TH36

Материал cast steel P250GH / 1.0432

Налягане PN 100

Размер 1 1/2" - 2" / DN 40 - 50

Max. working pressure (bar) at ?c			
PMO - maximum operating pressure		22	[bar]
Minimum operating pressure		0.25	[bar]
TMO - maximum operating temperature		250	

Body limiting conditions			
FLANGED PN40 / ANSI 300		FLANGED ANSI #150	Related temp
Allow. Press. / Bars		Allow. Press. / Bars	0C
40 bar		19,3 bar	
35 bar		15,8 bar	
30,4 bar		12,1 bar	
27,6 bar		10,2 bar	

Flow rate capacity in kg/h	MODEL	SIZE DN	DIFFERENTIAL PRESSURE (bar)														
				0.2	0.3	0.5	1	1.5	2	3	4	6	8	10	13	15	20
	TH36/4	40-50	280	480	560	1020	1320	1540	1820	2040	2400	2680	2800	2880	3000	3100	3180
	TH36/6	40-50	420	720	840	1530	1980	2310	2730	3060	3600	4020	4200	4320	4500	4650	4770

Dimensions (mm)														
Screwed and SW *				EN PN16/PN40				ANSI 150				ANSI 300		
SIZE DN	A	C	D	WGT. Kg	B	F	WGT. Kg	B	F	WGT. Kg	B	F	WGT. Kg	
40-1 1/2"	160	126	112	4.6	75	230	9.3	64	230	8.2	78	230	11.2	
50-2"	230	126	112	5.8	83	230	10.2	76	230	10	83	230	11.6	