

WELDOLET / ASME B.31

Материал steel A105

Налягане 63 Bar

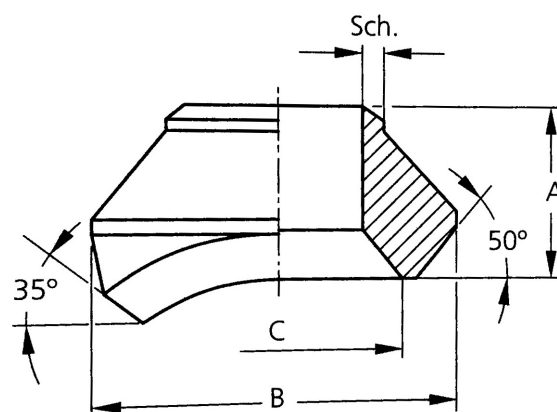
Размер 2" - 4"

APPLICATIONS

Threadlets are pipe branch weld connections with dismantable thread connection.

VARIANTS

Other materials: Ferritic and Austenitic steels



No.	Part	Material
1	Weldolet	Carbon steel A105

Specifications	
Standart:	ASME B.31

Run pipe	Outlet	Sch	A mm	B mm	C mm
3"	2"	SCH 80	38,1	88,9	65,1
6"	2"	SCH 80	38,1	88,9	65,1
4"	3"	SCH 40	44,4	122,2	93,7
12" - 14"	3"	SCH 40	44,4	122,2	93,7
6"	4"	SCH 40	50,8	152,4	120,6
12" - 14"	4"	SCH 40	50,8	152,4	120,6